



# **ECONOMIC INDICATORS**

NEW SOUTH WALES

EMBARGO: 11:30AM (CANBERRA TIME) MON 17 SEP 2001

## CONTENTS

	<i>Page</i>
Notes . . . . .	2
NSW overview . . . . .	3
Main features . . . . .	4
List of tables and graphs . . . . .	5
Financial Year Data . . . . .	6
Labour . . . . .	7
Production . . . . .	10
Building . . . . .	11
Retail trade . . . . .	12
New motor vehicle registrations . . . . .	13
Tourism . . . . .	14
Consumer and producer price indexes . . . . .	15
Finance . . . . .	16
State Government finance . . . . .	17
Investment . . . . .	18
International trade . . . . .	19

- For further information about these and related statistics, contact Jill Tomlinson on Sydney 02 9268 4123, or the National Information and Referral Service on 1300 135 070.

## NOTES

### FORTHCOMING ISSUES

#### ISSUE    ISSUE DATE

October 2001	15 October 2001
November 2001	15 November 2001
December 2001	17 December 2001
January 2002	15 January 2002

### DATA NOTES

ABS statistical series are being impacted to varying degrees as a result of The New Tax System (TNTS), introduced in Australia from 1 July 2000. TNTS included the removal of Wholesale Sales Tax and the introduction of a Goods and Services Tax (GST), and as a result, a wide range of ABS data series will reflect significant immediate and subsequent impacts. For further information see *Australian Economic Indicators, July 2000* (Cat. no. 1350.0).

### GENERAL

This publication provides information on a wide range of economic indicators which are the latest available at the time of publication. In a number of cases, figures appearing in this summary are preliminary and are subject to revision in subsequent issues.

### SEASONAL ADJUSTMENT AND TREND ESTIMATION

Seasonal adjustment is a means of removing the estimated effects of normal seasonal variation from a series so that the effects of other variations on that series can be more clearly recognised. This means that movements of seasonally adjusted estimates may not be reliable indicators of trend behaviour. Smoothing seasonally adjusted series produces a measure of the underlying trend by reducing the impact of the irregular component of the series. For an explanation of seasonal adjustment derivation, refer to the publication *Seasonally Adjusted Indicators* (Cat. no. 1308.0).

### SYMBOLS AND OTHER USAGES

FOB	free on board
kWh	kilowatt hour
n.a.	not available
n.p.	not available for publication but included in totals where applicable
n.y.a	not yet available
r	figure or series revised since previous issue
. .	not applicable
_	nil or rounded to zero
—	break in continuity of series (where a line is drawn across a column between two consecutive figures)

Gregory W. Bray  
Regional Director  
New South Wales

## NSW OVERVIEW

EMPLOYMENT	Employment in NSW in July 2001 was a seasonally adjusted figure of 3,059,100. The participation rate decreased by 0.3% from the previous month. The national participation rate was 63.6% in July 2001.
UNEMPLOYMENT	Unemployment in NSW decreased by 4.3% to a seasonally adjusted figure of 191,900 in July 2001. The unemployment rate in NSW was 5.9% while the national unemployment rate was 6.9%.
INDUSTRIAL DISPUTES	In NSW in May 2001 there were 14,400 working days lost due to industrial disputes, a decrease of 16.8% on the working days lost in April 2001. Nationally, there were 29,200 working days lost due to industrial disputes in May 2001.
AVERAGE WEEKLY EARNINGS	Average weekly earnings (full time adult ordinary time) in NSW in May 2001 were \$873.90,(seasonally adjusted) an increase of 5.9% compared with May 2000. The seasonally adjusted national average weekly earnings were \$826.30 in May 2001.
PRODUCTION	Coal production for June 2001 was 11,444,000 tonnes, a decrease of 18.2% from the previous month but an increase of 11.6% on June 2000. Nationally, there was 28,099,000 tonnes of coal produced.
BUILDING APPROVALS	The seasonally adjusted number of dwelling units approved for NSW in June 2001 was 3,072 dwelling units. This was a decrease of 7.6% from June 2000. Nationally, there were 12,294 dwelling units approved, an increase of 8.6% from June 2000.
RETAIL	In seasonally adjusted terms, total retail sales for NSW in June 2001 were \$4,632.3m. Nationally, total retail sales were \$13,494m.
NEW MOTOR VEHICLE REGISTRATIONS	In July 2001, there were 21,327 new motor vehicle registrations for NSW (seasonally adjusted), an increase of 9.7% on June 2001 but a decrease of 20.2% from July 2000. Nationally, there were 66,804 new motor vehicle registrations.
FINANCE	The seasonally adjusted value of housing finance commitments for owner occupation in NSW in June 2001 was \$3,193m, an increase of 43.1% on June 2000. Nationally, there were \$7,802m housing finance commitments for owner occupation.
IMPORTS AND EXPORTS	In June 2001 there were \$4,312m of imports into NSW, an increase of 2.2% on May 2001 but a decrease of 11.4% from June 2000. The value of exports from NSW was \$1,920m, a decrease of 3.8% from May 2001. Nationally, there were \$9,479m of imports and \$10,088m of exports.

## MAIN FEATURES

### BUILDING APPROVALS

There was an increase in the number of new houses in NSW approved in the month of June 2001. The number of new houses (seasonally adjusted) was 2,078, an increase of 18.6% on the previous month and an increase of 9.4% from the corresponding period of the previous year. The number of dwelling units approved (seasonally adjusted) in June 2001 was 3,072, which was a decrease of 7.6% from June 2000. Nationally, the number of dwelling units approved was 12,294, an increase of 3.0% on May 2001 and an increase of 8.6% on June 2000.

For NSW in June 2001, the seasonally adjusted value for new residential buildings was \$474.2m, an increase of 7.2% on May 2001 and an increase of 4.8% on June 2000. The value (seasonally adjusted) of alterations and additions to residential buildings in June 2001 increased 13.9% from the previous month to \$105.8m.

The value (in original terms) of non-residential building in NSW decreased 5.3% from May 2001 to \$252m and decreased 28.1% from June 2000. The value of all building (in original terms) in NSW was \$788.3m, a decrease of 10.4% on May 2001. Nationally, the value of all building was \$2,759.9m which represented a decrease of 20.1% on May 2001 and an increase of 4.1% on the corresponding period of the previous year.

### NEW MOTOR VEHICLE REGISTRATIONS

New motor vehicle registrations in seasonally adjusted terms in July 2001 increased 9.7% on the previous month to 21,327 registrations. New registrations of passenger vehicles (17,895) and other vehicles (3,432) increased 8.9% and 13.5% respectively over the same period. Nationally, new motor vehicle registrations in July 2001 increased 13.6% to 55,980 registrations compared to June 2001.

Compared to the same period last year, seasonally adjusted new motor vehicle registrations for NSW in July 2001 decreased by 20.2%. Over the same period passenger vehicle registrations in NSW decreased by 24.4% while other vehicle registrations increased by 11.9%. Nationally, passenger vehicle registrations and total vehicle registrations decreased by 20.2% and 16.2% respectively, while other vehicle registrations increased by 13.4% from July 2000.

## LIST OF TABLES AND GRAPHS

page

FINANCIAL YEAR DATA	<b>1</b>	Financial year data, various sectors — NSW and Australia	6
LABOUR	<b>2</b>	Labour data, latest time period, NSW and Australia	7
	<b>3</b>	Labour data, time series, NSW	7
	<b>4</b>	Labour force status of the civilian population, NSW	8
	<b>5</b>	Graph: Unemployment rates, NSW and Australia	9
	<b>6</b>	Coal and electricity production, latest time period, NSW and Australia	10
PRODUCTION	<b>7</b>	Coal and electricity production, time series, NSW	10
BUILDING	<b>8</b>	Building approvals, latest time period, NSW and Australia	11
	<b>9</b>	Building approvals, time series, NSW	11
RETAIL TRADE	<b>10</b>	Turnover of retail establishments, latest time period, NSW and Australia	12
	<b>11</b>	Turnover of retail establishments, seasonally adjusted, time series, NSW	12
NEW MOTOR VEHICLE REGISTRATIONS	<b>12</b>	New motor vehicle registrations, latest time period, NSW and Australia	13
	<b>13</b>	New motor vehicle registrations, seasonally adjusted, time series, NSW	13
TOURISM	<b>14</b>	Accommodation establishments, latest time period, NSW and Australia	14
	<b>15</b>	Accommodation establishments, time series, Sydney and NSW	14
	<b>16</b>	Graph: Hotels, motels etc., monthly room occupancy rates, Sydney Tourism Region and NSW	14
CONSUMER AND PRODUCER PRICE INDEXES	<b>17</b>	Consumer and producer price indexes, latest time period, NSW and Australia	15
	<b>18</b>	Consumer and producer price indexes, time series, NSW	15
	<b>19</b>	Graph: Consumer Price Index, Sydney and average of eight capital cities	15
FINANCE	<b>20</b>	Finance commitments, latest time period, NSW and Australia	16
	<b>21</b>	Finance commitments, time series, NSW	16
STATE GOVERNMENT FINANCE	<b>22</b>	Government finance, general government sector, monthly operating statement, NSW	17
INVESTMENT	<b>23</b>	Actual private new fixed capital expenditure, latest time period, NSW and Australia	18
	<b>24</b>	Actual private new fixed capital expenditure, time series, NSW	18
	<b>25</b>	Graph: Actual private new fixed capital expenditure by type of asset, trend estimate, NSW	18
INTERNATIONAL TRADE	<b>26</b>	Imports and exports, latest time period, NSW and Australia	19
	<b>27</b>	Imports and exports, time series, NSW	19

1 FINANCIAL YEAR DATA, VARIOUS SECTORS — NSW AND AUSTRALIA

	<i>Unit</i>	<i>Period</i>	<i>Latest figure for New South Wales no.</i>	<i>Proportion of Australian total %</i>
<b>Population</b>				
Estimated resident population (at end December)	'000	2000	6 503	33.7
<b>National accounts</b>				
Gross State Product	\$m	1999-00	225 745	35.7
State final demand	\$m	1999-00	222 901	34.7
<b>Overseas trade</b>				
Overseas imports into NSW	\$m	2000-01	52 506	44.4
Total overseas exports	\$m	2000-01	22 720	20.1
<b>Production</b>				
Value of agricultural commodities produced	\$m	1999-00	p8 204	27.4
Coal and metal ore mining operations—turnover	\$m	1999-00	5 660	21.2
Manufacturing Industry—turnover	\$m	1999-00	p73 471	31.8
Tourist accommodation—takings	\$m	1999-00	1 542	35.7
Building approvals	\$m	2000-01	9 506	29.8
Building commencements	\$m	1999-00	12 926	34.1
Engineering construction—value of work done	\$m	1999-00	6 231	31.3
<b>Consumption and investment</b>				
New motor vehicle registrations	no.	2000-01	270 995	33.7
Private new capital expenditure	\$m	1999-00	14 818	34.9
Retail Turnover	\$m	2000-01	53 913	34.7
<b>Finance</b>				
Housing finance commitments	\$m	2000-01	30 959	39.4
<b>Selected service industries</b>				
Income from video hire industry	\$m	1999-00	181	30.4
Admissions to museums(a)	'000	1999-00	10 146	36.9
Visits to public libraries	'000	1999-00	30 442	32.6
Expenditure on direct community services activities	\$m	1999-00	3 699	34.4
Gross box office receipts for motion picture exhibition	\$m	1999-00	244	35.9
<b>Research and development</b>				
Research and development expenditure (all sectors)	\$m	1999-00	1 414	35.0

(a) Includes paid and free admissions.

2 LABOUR — NSW AND AUSTRALIA

	New South Wales					Australia		
	Unit	Latest period	Latest figure	Change from prior period	Change from same period prior year	Latest figure	Change from prior period	Change from same period prior year
				%	%		no.	%
Employed persons (seasonally adjusted)	'000	July 2001	3 059.1	—	—	9 135.9	-0.1	0.1
Unemployed persons (seasonally adjusted)	'000	July 2001	191.9	-4.3	14.8	674.0	-1.0	14.0
Labour force (seasonally adjusted)	'000	July 2001	3 251.0	-0.3	0.7	9 809.9	-0.2	0.9
Participation rate (seasonally adjusted)	%	July 2001	62.5	-0.3	-0.2	63.6	-0.3	-0.3
Unemployment rate (seasonally adjusted)	%	July 2001	5.9	-4.8	13.5	6.9	—	13.1
Industrial disputes — working days lost	'000	May 2001	14.4	-16.8	-69.4	29.2	-0.7	-57.0
Job vacancies	'000	May 2001	28.4	-11.0	-32.0	83.4	-12.7	-18.3
Average weekly employee earnings — full-time adult ordinary time earnings (seasonally adjusted)	\$	May 2001	873.9	3.9	5.9	826.3	2.2	5.3

Source: *Average Weekly Earnings, States and Australia* (Cat. no. 6302.0); *Industrial Disputes, Australia* (Cat. no. 6321.0); *Job Vacancies, Australia* (Cat. no. 6354.0); *Labour Force, Australia, Preliminary* (Cat. no. 6202.0).

3 LABOUR — NSW

	Seasonally adjusted(a)						
	Employed persons	Unemployed persons	Labour force	Participation rate	Unemployment rate	Industrial disputes (working days lost)	Job vacancies
	'000	'000	'000	%	%	'000	'000
<b>2000</b>							
May	3 054.6	180.3	3 234.9	62.9	5.6	47.1	41.8
June	3 043.0	181.7	3 224.7	62.6	5.6	16.5	..
July	3 059.8	167.1	3 226.9	62.6	5.2	7.5	..
August	3 082.1	168.4	3 250.5	63.0	5.2	8.8	43.9
September	3 060.6	169.6	3 230.3	62.5	5.3	8.3	..
October	3 046.2	168.8	3 215.0	62.2	5.3	5.3	..
November	3 028.3	176.5	3 204.8	62.0	5.5	9.2	40.4
December	3 033.4	184.2	3 217.6	62.2	5.7	4.4	..
<b>2001</b>							
January	3 035.3	179.5	3 214.9	62.1	5.6	5.8	..
February	3 032.1	190.8	3 222.9	62.2	5.9	8.6	32.0
March	3 035.7	174.9	3 210.6	61.9	5.4	8.2	..
April	3 070.1	187.3	3 257.4	62.8	5.7	17.3	..
May	3 064.7	189.4	3 254.1	62.6	5.8	14.4	28.4
June	3 060.4	200.6	3 261.0	62.7	6.2	n.y.a.	..
July	3 059.1	191.9	3 251.0	62.5	5.9	n.y.a.	..

(a) Seasonally adjusted estimates have been revised from February 1978 to reflect the annual reanalysis of seasonal factors which occurs in February each year. For further information please see the feature article in the February 2001 edition of *Labour Force, Australia* (Cat. no. 6203.0).

Source: *Industrial Disputes, Australia* (Cat. no. 6321.0); *Job Vacancies, Australia* (Cat. no. 6354.0); *Labour Force, Australia, Preliminary* (Cat. no. 6202.0).

4 LABOUR FORCE STATUS, NSW — ORIGINAL

	<i>Employed</i>		<i>Unemployed</i>		<i>Labour force</i>	<i>Not in labour force</i>	<i>Civilian population aged 15 years and over</i>	<i>Unemployment rate(a)</i>	<i>Participation rate(b)</i>
	<i>Full-time workers</i>	<i>Total</i>	<i>Looking for full-time work</i>	<i>Total</i>					
	'000	'000	'000	'000					
MALES									
<b>July</b>									
1998	1 466.1	1 645.7	112.3	121.4	1 767.1	692.6	2 459.7	6.9	71.8
1999	1 492.5	1 690.8	82.5	97.9	1 788.7	707.7	2 496.4	5.5	71.7
2000	1 529.6	1 736.5	78.9	94.2	1 830.7	706.9	2 537.6	5.1	72.1
<b>2000</b>									
May	1 504.9	1 720.8	79.0	96.8	1 817.7	713.5	2 531.1	5.3	71.8
June	1 518.4	1 720.1	84.6	98.4	1 818.5	716.2	2 534.7	5.4	71.7
July	1 529.6	1 736.5	78.9	94.2	1 830.7	706.9	2 537.6	5.1	72.1
August	1 492.9	1 704.6	86.1	97.5	1 802.2	738.4	2 540.5	5.4	70.9
September	1 519.5	1 742.4	85.2	101.2	1 843.6	699.9	2 543.5	5.5	72.5
October	1 507.8	1 724.6	82.9	95.9	1 820.5	725.0	2 545.5	5.3	71.5
November	1 489.4	1 701.9	87.6	102.4	1 804.3	743.2	2 547.4	5.7	70.8
December	1 513.6	1 729.5	93.4	110.4	1 839.9	709.5	2 549.4	6.0	72.2
<b>2001</b>									
January	1 475.8	1 685.8	104.5	120.3	1 806.1	745.2	2 551.3	6.7	70.8
February	1 479.1	1 684.9	103.8	124.4	1 809.2	743.9	2 553.2	6.9	70.9
March	1 484.0	1 700.1	90.8	108.5	1 808.5	746.5	2 555.1	6.0	70.8
April	1 480.8	1 714.1	89.1	105.1	1 819.1	738.5	2 557.6	5.8	71.1
May	1 478.0	1 713.1	89.0	107.8	1 820.9	739.3	2 560.1	5.9	71.1
June	1 479.3	1 713.0	91.6	110.0	1 823.1	739.6	2 562.7	6.0	71.1
July	1 484.9	1 732.4	87.4	103.8	1 836.2	729.4	2 565.6	5.7	71.6
FEMALES									
<b>July</b>									
1998	766.7	1 262.4	58.4	84.2	1 346.5	1 201.9	2 548.5	6.3	52.8
1999	755.2	1 269.9	51.9	71.2	1 341.2	1 240.9	2 582.0	5.3	51.9
2000	812.3	1 346.6	36.0	57.8	1 404.4	1 212.2	2 616.7	4.1	53.7
<b>2000</b>									
May	785.6	1 327.3	52.5	81.4	1 408.7	1 202.5	2 611.2	5.8	53.9
June	783.4	1 329.0	39.4	72.4	1 401.4	1 212.6	2 614.0	5.2	53.6
July	812.3	1 346.6	36.0	57.8	1 404.4	1 212.2	2 616.7	4.1	53.7
August	787.5	1 334.4	39.7	67.3	1 401.7	1 217.6	2 619.3	4.8	53.5
September	805.6	1 359.4	42.6	70.6	1 429.9	1 192.1	2 622.0	4.9	54.5
October	785.4	1 336.8	39.4	63.4	1 400.2	1 223.3	2 623.5	4.5	53.4
November	787.6	1 320.8	43.0	67.2	1 388.0	1 236.9	2 624.9	4.8	52.9
December	799.2	1 345.9	53.4	74.3	1 420.2	1 206.2	2 626.4	5.2	54.1
<b>2001</b>									
January	787.5	1 305.9	46.2	69.2	1 375.1	1 252.6	2 627.7	5.0	52.3
February	790.6	1 321.2	59.6	91.0	1 412.1	1 216.9	2 629.0	6.4	53.7
March	800.3	1 331.2	45.7	81.0	1 412.2	1 218.1	2 630.3	5.7	53.7
April	785.7	1 357.1	48.2	81.4	1 438.5	1 193.7	2 632.3	5.7	54.7
May	781.5	1 344.7	50.2	79.1	1 423.8	1 210.4	2 634.2	5.6	54.1
June	792.0	1 353.6	50.3	78.7	1 432.4	1 203.8	2 636.2	5.5	54.3
July	790.7	1 350.9	47.3	70.6	1 421.6	1 217.2	2 638.7	5.0	53.9

(a) For footnotes see end of table.



4 LABOUR FORCE STATUS, NSW — ORIGINAL — continued

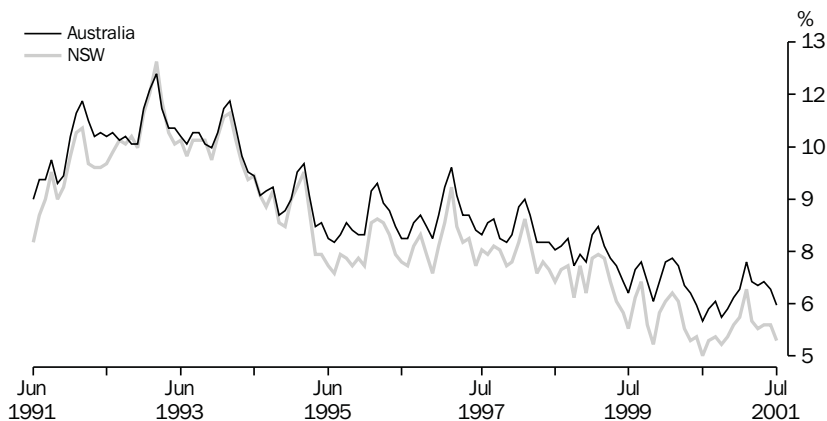
	Employed		Unemployed		Labour force	Not in labour force	Civilian population aged 15 years and over	Unemployment rate(a)	Participation rate(b)
	Full-time workers	Total	Looking for full-time work	Total					
	'000	'000	'000	'000					
PERSONS									
<b>July</b>									
1998	2 232.8	2 908.0	170.7	205.6	3 113.6	1 894.6	5 008.2	6.6	62.2
1999	2 247.7	2 960.7	134.3	169.2	3 129.9	1 948.6	5 078.5	5.4	61.6
2000	2 341.9	3 083.1	114.9	152.0	3 235.1	1 919.1	5 154.3	4.7	62.8
<b>2000</b>									
May	2 290.5	3 048.1	131.4	178.2	3 226.3	1 916.0	5 142.3	5.5	62.7
June	2 301.7	3 049.1	124.0	170.8	3 219.9	1 928.7	5 148.6	5.3	62.5
July	2 341.9	3 083.1	114.9	152.0	3 235.1	1 919.1	5 154.3	4.7	62.8
August	2 280.4	3 039.0	125.8	164.9	3 203.9	1 956.0	5 159.9	5.1	62.1
September	2 325.2	3 101.7	127.8	171.8	3 273.5	1 892.0	5 165.5	5.2	63.4
October	2 293.3	3 061.4	122.3	159.3	3 220.7	1 948.3	5 169.0	4.9	62.3
November	2 277.0	3 022.7	130.5	169.6	3 192.3	1 980.1	5 172.4	5.3	61.7
December	2 312.8	3 075.4	146.8	184.7	3 260.1	1 915.7	5 175.8	5.7	63.0
<b>2001</b>									
January	2 263.4	2 991.7	150.8	189.4	3 181.2	1 997.8	5 179.0	6.0	61.4
February	2 269.7	3 006.0	163.4	215.3	3 221.4	1 960.8	5 182.2	6.7	62.2
March	2 284.3	3 031.3	136.5	189.5	3 220.8	1 964.6	5 185.4	5.9	62.1
April	2 266.5	3 071.2	137.2	186.5	3 257.7	1 932.2	5 189.9	5.7	62.8
May	2 259.4	3 057.7	139.2	186.9	3 244.7	1 949.7	5 194.4	5.8	62.5
June	2 271.3	3 066.7	142.0	188.8	3 255.4	1 943.4	5 198.9	5.8	62.6
July	2 275.6	3 083.3	134.7	174.4	3 257.7	1 946.6	5 204.3	5.4	62.6

(a) The number of unemployed in each group expressed as a percentage of the labour force in the same group.

(b) The labour force in each group expressed as a percentage of the civilian population aged 15 years and over in the same group.

Source: Labour Force, Australia, Preliminary (Cat. no. 6202.0).

5 UNEMPLOYMENT RATE—ORIGINAL



Source: Labour Force, Australia, Preliminary (Cat. no. 6202.0)

6 COAL AND ELECTRICITY PRODUCTION, NSW AND AUSTRALIA — ORIGINAL

	Unit	Latest period	Latest figure	New South Wales		Australia		
				Change from prior period	Change from same period prior year	Change from prior period	Change from same period prior year	
				%	%	Latest figure	%	%
Raw coal won								
Underground	'000 tonnes	Jun 2001	4 676	-13.0	21.5	8 380	-10.5	13.7
Open cut	'000 tonnes	Jun 2001	6 768	-21.5	5.6	19 719	-11.0	11.0
Total	'000 tonnes	Jun 2001	11 444	-18.2	11.6	28 099	-10.8	11.8
Electricity	mill. kWh	Jun qtr 2001	16 642	—	-4.0	46 317	-1.2	-2.2

Source: Joint Coal Board for NSW and Australia from ABS unpublished statistics, Manufacturing Production, Australia (Cat. no. 8301.0).

7 COAL AND ELECTRICITY PRODUCTION, NSW — ORIGINAL

	Raw coal won			Electricity mill. kWh
	Underground	Open cut	Total	
	'000 tonnes	'000 tonnes	'000 tonnes	
<b>1998-1999 r</b>	51 318	80 063	131 382	63 743
<b>1999-2000 r</b>	52 763	80 133	132 896	65 934
<b>2000-2001</b>	53 414	86 012	139 427	69 324
<b>1999</b>				
December r	5 018	6 967	11 985	—
<b>2000</b>				
April	3 855	5 084	8 939	—
May r	5 601	8 591	14 192	17 334
June r	3 847	6 410	10 257	—
July r	4 102	6 515	10 617	—
August r	5 613	8 269	13 883	19 289
September r	3 836	7 198	11 034	—
October r	4 552	6 976	11 528	—
November r	5 708	8 014	13 722	16 749
December	3 166	6 253	9 419	—
<b>2001</b>				
January r	3 316	6 395	9 712	—
February r	4 241	5 999	10 240	16 644
March r	5 469	7 763	13 232	—
April r	3 361	7 240	10 601	—
May r	5 373	8 622	13 994	16 642
June	4 676	6 768	11 444	—

Source: Joint Coal Board, Manufacturing Production, Australia (Cat. no. 8301.0).

8 BUILDING APPROVALS — NSW AND AUSTRALIA

	Unit	Latest period	Latest figure	New South Wales		Australia		
				Change from prior period %	Change from same period prior year %	Latest figure	Change from prior period %	Change from same period prior year %
Number of dwelling units(a) (seasonally adjusted(b))								
New houses	no.	Jun 2001	2 078	18.6	9.4	8 981	12.0	20.9
Total	no.	Jun 2001	3 072	0.5	-7.6	12 294	3.0	8.6
Value of new residential building (seasonally adjusted)	\$m	Jun 2001	474.2	7.2	4.8	1 656.8	10.4	17.9
Value of alterations and additions to residential building(c) (seasonally adjusted)	\$m	Jun 2001	105.8	13.9	21.6	306.7	2.4	16.2
Value of non-residential building(d) (original)	\$m	Jun 2001	252.0	-5.3	-28.1	895.8	-35.5	-10.5
Value of all building (original)	\$m	Jun 2001	788.3	-10.4	-8.9	2 759.9	-20.1	4.1

(a) Includes dwelling units approved as part of the construction of non-residential building and alterations and additions to existing buildings (including conversions to dwelling units).

(b) Seasonally adjusted and trend estimates to November 2000 have been revised. See Building Approvals, Australia (Cat. no. 8731.0).

(c) Valued at \$10,000 or more. Includes conversions of existing buildings into residential buildings.

(d) Valued at \$50,000 or more.

Source: Building Approvals, Australia (Cat. no. 8731.0).

9 BUILDING APPROVALS — NSW

	Number of dwelling units(a), seasonally adjusted				Value of building approvals(b)			
	New houses		Total		Seasonally adjusted		Original	
	Private sector	Total	Private sector	Total	New residential building	Alterations and additions to residential building(c)	Non-residential building(d)	All building
	no.	no.	no.	no.	\$m	\$m	\$m	\$m
<b>1998-1999 r</b>	..	..	..	..	..	..	4 558.3	12 032.3
<b>1999-2000 r</b>	..	..	..	..	..	..	4 511.3	12 684.7
<b>2000-2001</b>	..	..	..	..	..	..	3 622.9	9 505.6
<b>2000</b>								
April	2 220	2 241	3 586	3 727	483.5	109.8	534.7	1 066.0
May	2 052	2 068	3 873	3 956	541.2	121.0	312.0	1 101.7
June	1 891	1 899	3 202	3 326	452.6	87.0	350.5	865.3
July	1 363	1 371	1 904	1 992	285.3	75.2	287.4	668.8
August	1 543	1 553	2 459	2 529	383.4	83.7	280.4	770.5
September	1 492	1 500	2 805	2 892	409.2	84.6	309.8	765.9
October	1 753	1 762	3 563	3 606	473.6	120.4	381.2	942.6
November	1 530	1 540	2 913	2 994	409.2	87.1	270.1	858.3
December	1 466	1 477	2 819	2 918	384.4	140.2	208.9	693.6
<b>2001</b>								
January	1 548	1 556	2 856	2 902	412.9	84.3	553.1	1 007.1
February	1 573	1 579	2 448	2 614	348.0	86.4	388.8	810.3
March	1 455	1 466	2 636	2 714	376.7	93.1	208.3	658.8
April	1 542	1 549	2 576	2 693	376.3	88.9	216.8	661.3
May	1 741	1 752	2 949	3 057	442.4	92.9	266.1	880.1
June	2 074	2 078	3 052	3 072	474.2	105.8	252.0	788.3

(a) Includes dwelling units approved as part of the construction of non-residential building and alterations and additions to existing buildings (including conversions to dwelling units).

(b) From July 2000, value data for both residential and non-residential building approvals will be on a GST inclusive basis.

(c) Valued at \$10,000 or more. Includes conversions of existing buildings into residential buildings.

(d) Valued at \$50,000 or more.

Source: Building Approvals, Australia (Cat. no. 8731.0).

10 TURNOVER OF RETAIL ESTABLISHMENTS(a), NSW AND AUSTRALIA(b) — SEASONALLY ADJUSTED

	Latest period	New South Wales			Australia		
		Latest figure	Change from prior period	Change from same period prior year	Latest figure	Change from prior period	Change from same period prior year
		\$m	%	%	\$m	%	%
Food retailing	Jun 2001	1 727.0	1.2	9.1	5 353.3	0.5	8.0
Department stores	Jun 2001	384.4	-0.9	-17.3	1 123.5	1.1	-13.9
Clothing and soft good retailing	Jun 2001	331.8	-0.6	-12.1	884.1	0.4	-11.7
Household good retailing	Jun 2001	506.5	5.1	-12.0	1 629.8	5.9	-8.5
Recreational good retailing	Jun 2001	210.1	-0.2	4.2	621.5	1.9	2.1
Other retailing	Jun 2001	493.8	0.9	3.4	1 513.2	0.9	9.0
Hospitality and services	Jun 2001	978.8	-1.6	9.9	2 368.6	-0.2	12.5
<b>Total value of retail sales</b>	Jun 2001	<b>4 632.3</b>	<b>0.6</b>	<b>1.3</b>	<b>13 494.0</b>	<b>1.1</b>	<b>2.6</b>

(a) The figures shown are derived from a monthly survey of retail establishments. Excludes motor vehicle, boat and caravan dealers, service stations, smash repairers, tyre and battery retailers, bread and milk vendors, footwear repairers and electrical appliance repairers n.e.c. Retail establishments which do not have employees are excluded from the survey. Turnover includes retail sales, wholesale sales, takings from repairs, meals and hiring of goods; and commissions from agency activity (e.g. commissions received from collecting dry cleaning, selling lottery tickets etc.).

(b) Data from July 2000 reference month onwards are recorded inclusive of GST.

Source: Retail Trade, Australia (Cat. no. 8501.0).

11 TURNOVER OF RETAIL ESTABLISHMENTS(a), NSW(b) — SEASONALLY ADJUSTED(c)

	Food retailing	Department stores	Clothing and soft good retailing	Household good retailing	Recreational good retailing	Other retailing	Hospitality and services	Total
	\$m	\$m	\$m	\$m	\$m	\$m	\$m	\$m
<b>2000</b>								
March	1 550.2	374.6	319.0	451.2	195.7	426.9	865.6	4 183.2
April	1 560.6	375.5	301.0	447.3	201.9	427.0	873.3	4 186.6
May	1 553.7	381.9	314.2	463.2	216.1	436.0	875.2	4 240.4
June	1 586.0	463.3	373.6	578.8	202.5	479.1	887.3	4 570.5
July	1 598.4	299.0	276.4	426.2	219.7	394.4	925.5	4 139.4
August	1 637.0	397.3	299.9	474.2	213.8	425.4	991.0	4 438.7
September	1 651.2	393.6	366.8	466.0	204.9	463.0	1 055.1	4 600.5
October	1 630.4	387.3	308.3	470.2	214.6	450.5	986.6	4 447.9
November	1 606.8	374.5	304.6	483.1	212.6	440.9	953.3	4 375.9
December	1 640.9	393.2	312.3	488.0	208.1	450.9	953.4	4 428.9
<b>2001</b>								
January	1 667.3	388.7	303.7	493.9	227.5	455.3	988.1	4 524.6
February	1 677.5	390.6	298.0	480.8	240.9	472.5	996.6	4 556.9
March	1 681.9	386.8	322.5	489.3	232.7	471.1	1 005.4	4 589.7
April	1 726.7	388.8	331.6	484.6	219.4	480.8	984.0	4 615.7
May	1 706.6	388.6	355.4	476.3	209.0	488.4	1 003.5	4 607.7
June	1 727.0	384.4	331.8	506.5	210.1	493.8	978.8	4 632.3

(a) The figures shown are derived from a monthly survey of retail establishments. Excludes motor vehicle, boat and caravan dealers, service stations, smash repairers, tyre and battery retailers, bread and milk vendors, footwear repairers and electrical appliance repairers n.e.c. Retail establishments which do not have employees are excluded from the survey. Turnover includes retail sales, wholesale sales, takings from repairs, meals and hiring of goods; and commissions from agency activity (e.g. commissions received from collecting dry cleaning, selling lottery tickets etc.).

(b) Data from July 2000 reference month onwards are recorded inclusive of GST.

(c) Data for previous months have been revised due to concurrent seasonal adjustment methodology. See Explanatory Notes in Retail Trade, Australia (Cat. no. 8501.0).

Source: Retail Trade, Australia (Cat. no. 8501.0).

12 NEW MOTOR VEHICLE REGISTRATIONS(a), NSW AND AUSTRALIA — SEASONALLY ADJUSTED(b)

	Latest period	New South Wales			Australia		
		Latest figure	Change from prior period	Change from same period prior year	Latest figure	Change from prior period	Change from same period prior year
		no.	%	%	no.	%	%
Passenger vehicles	Jul 2001	17 895	8.9	-24.4	55 980	13.6	-20.2
Other vehicles (excluding motor cycles)	Jul 2001	3 432	13.5	11.9	10 824	12.0	13.4
Total registrations (excluding motor cycles)	Jul 2001	21 327	9.7	-20.2	66 804	13.3	-16.2

(a) Includes vehicles (other than those of the defence forces) owned by Government departments and authorities. Excludes mobile plant and equipment, tractors, trailers and non-motorised caravans.

(b) The changes to the seasonally adjusted series result from the annual re-estimation of seasonal factors.

Source: *New Motor Vehicle Registrations, Australia, Preliminary (Cat. no. 9301.0)*.

13 NEW MOTOR VEHICLE REGISTRATIONS(a), NSW — SEASONALLY ADJUSTED(b)

	Passenger vehicles	Other vehicles (excluding motor cycles)	Total (excluding motor cycles)
	no.	no.	no.
<b>2000</b>			
May	16 985	3 670	20 655
June	13 466	3 651	17 117
July	23 670	3 066	26 736
August	23 809	3 616	27 425
September	19 247	3 387	22 634
October	18 823	3 328	22 151
November	19 611	3 063	22 673
December	21 804	3 430	25 234
<b>2001</b>			
January	18 585	3 529	22 114
February	17 706	3 290	20 996
March	18 293	3 108	21 401
April	18 160	3 086	21 246
May	17 989	2 949	20 938
June	16 425	3 024	19 449
July	17 895	3 432	21 327

(a) Includes vehicles (other than those of the defence forces) owned by Government departments and authorities. Excludes mobile plant and equipment, tractors, trailers and non-motorised caravans.

(b) The changes to the seasonally adjusted series result from the annual re-estimation of seasonal factors.

Source: *New Motor Vehicle Registrations, Australia, Preliminary (Cat. no. 9301.0)*.

14 ACCOMMODATION ESTABLISHMENTS(a) NSW AND AUSTRALIA — ORIGINAL

	Unit	Latest period	New South Wales				Australia	
			Latest figure	Change from prior period	Change from same period prior year	Latest figure	Change from prior period	Change from same period prior year
				%	%		%	%
Room nights	'000	Mar qtr 2001	3 421.1	-2.2	1.0	10 188.5	-3.4	1.0
Room occupancy rate	%	Mar qtr 2001	57.9	-1.4	-4.0	57.7	-1.9	-0.9
Takings(b)	\$'000	Mar qtr 2001	433 156	-6.0	8.9	1 191 842	-3.9	9.5

(a) Licensed hotels with facilities, motels and guest houses and serviced apartments with 15 or more rooms or units.

(b) Includes GST.

Source: Tourist Accommodation, Australia (Cat. no. 8635.0).

15 ACCOMMODATION ESTABLISHMENTS(a) SYDNEY AND NSW — ORIGINAL

	Sydney Tourism Region(b)			New South Wales		
	Room nights	Room occupancy rate	Takings(c)	Room nights	Room occupancy rate	Takings
	'000	%	\$'000	'000	%	\$'000
<b>1999</b>						
December qtr	1 962.5	72.3	276 165	3 423.1	60.9	395 165
<b>2000</b>						
March qtr	1 980.0	71.7	279 374	3 388.1	60.3	397 869
June qtr	1 902.6	67.1	258 225	3 324.0	58.1	374 005
September qtr	2 093.6	69.6	412 378	3 543.3	59.7	555 244
December qtr	2 096.0	68.8	334 433	3 498.0	58.7	460 756
<b>2001</b>						
March qtr	2 037.9	67.1	304 602	3 421.1	57.9	433 156

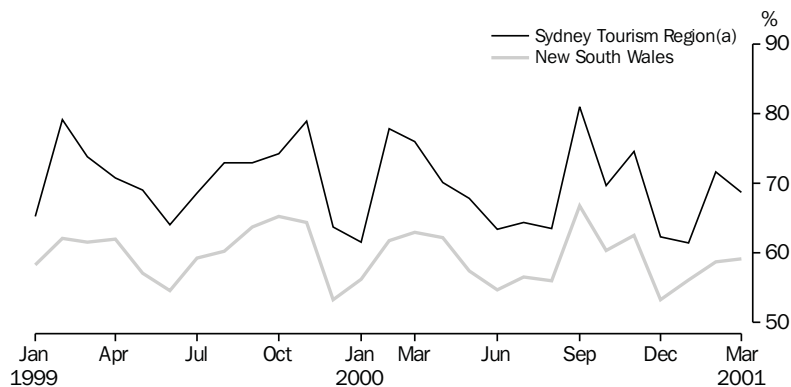
(a) Licensed hotels with facilities, motels and guest houses and serviced apartments with 15 or more rooms or units.

(b) Excludes Gosford, Wyong and Blue Mountains Statistical Local Areas.

(c) Takings after 1 July 2000 are on a GST inclusive basis.

Source: Tourist Accommodation, Small Area Data, New South Wales (Cat. no. 8635.1.40.001).

16 ACCOMMODATION ESTABLISHMENTS,  
MONTHLY ROOM OCCUPANCY RATE—ORIGINAL



(a) Excludes Gosford, Wyong and Blue Mountains Statistical Local Areas.

Source: Tourist Accommodation, Small Area Data, NSW (Prod. no. 8635.1.40.001).

17 CONSUMER AND PRODUCER PRICE INDEXES — NSW AND AUSTRALIA

	Unit	New South Wales(a)				Australia(b)		
		Latest period	Latest figure	Change from prior period %	Change from same period prior year %	Latest figure	Change from prior period %	Change from same period prior year %
Consumer Price Index (all groups)	1989-90 =100.0	Jun qtr 2001	135.0	0.7	6.3	133.8	0.8	6.0
Price index of materials used in house building (all groups)	1989-90 =100.0	Jun qtr 2001	130.2	0.3	-0.8	124.4	0.2	-0.9
Price index of materials used in building other than house building (all groups)	1989-90 =100.0	Jun qtr 2001	116.7	0.3	-0.5	117.2	0.4	-0.2

(a) Refers to State capital city — Sydney.

(b) For the Consumer Price Index this is the weighted average of eight capital cities and for the other two indexes, the weighted average of the six State capital cities.

Source: Consumer Price Index, Australia (Cat. no. 6401.0); Producer Price Indexes, Australia (Cat. no. 6427.0).

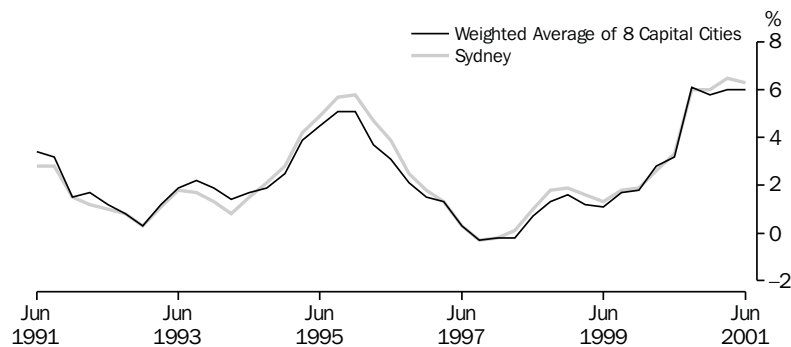
18 CONSUMER AND PRODUCER PRICE INDEXES — NSW(a)

	Consumer Price Index, all groups	Price Index of materials used in house building, all groups	Price Index of materials used in building other than house building, all groups
	1989-90 = 100.0	1989-90 = 100.0	1989-90 = 100.0
<b>2000</b>			
March qtr	125.8	128.0	116.4
June qtr	127.0	131.2	117.3
September qtr	131.6	130.0	115.4
December qtr	132.2	129.8	115.7
<b>2001</b>			
March qtr	134.0	129.8	116.4
June qtr	135.0	130.2	116.7

(a) Refers to State capital city — Sydney.

Source: Consumer Price Index, Australia (Cat. no. 6401.0); Producer Price Indexes, Australia (Cat. no. 6427.0).

19 CONSUMER PRICE INDEX, ANNUAL RATE OF CHANGE



Source: Consumer Price Index (Cat. no. 6401.0).

20 SECURED HOUSING FINANCE COMMITMENTS TO INDIVIDUALS FOR OWNER OCCUPATION — NSW AUSTRALIA

	Latest period	New South Wales			Australia		
		Latest figure	Change from prior period	Change from same period prior year	Latest figure	Change from prior period	Change from same period prior year
			\$m	%		%	\$m
Lending commitments for the construction or purchase of dwellings—							
Construction of dwellings	Jun 2001	247	0.4	25.4	923	1.9	51.8
Purchase of newly erected dwellings	Jun 2001	151	12.7	75.6	312	3.0	25.8
Purchase of established dwellings(a)	Jun 2001	2 217	-7.8	36.1	4 972	-7.5	39.6
Refinancing of existing dwellings	Jun 2001	731	-6.5	54.2	1 599	-8.6	35.3
Lending commitments for alterations and additions	Jun 2001	127	3.3	21.0	329	-2.1	24.6
Total lending commitments to individuals for housing(b)	Jun 2001	3 346	-6.2	40.2	7 807	-6.3	39.4
Total lending commitments to individuals for housing (seasonally adjusted)(b)	Jun 2001	3 193	1.5	43.1	7 802	4.4	43.2

(a) Excludes refinancing.

(b) Excludes alterations and additions.

Source: *Housing Finance for Owner Occupation, Australia (Cat. no. 5609.0)*.

21 SECURED HOUSING FINANCE COMMITMENTS TO INDIVIDUALS FOR OWNER OCCUPATION — NSW

	Lending commitments for the construction or purchase of dwellings				Lending commitments for alterations and additions	Total lending commitments to individuals for housing(b)	
	Construction of dwellings	Purchase of newly erected dwellings	Purchase of established dwellings(a)	Refinancing of existing dwellings		Original	Seasonally adjusted
	\$m	\$m	\$m	\$m		\$m	\$m
<b>1998-1999</b>	2 990	1 147	16 761	4 026	1 126	24 925	..
<b>1999-2000</b>	3 268	1 129	21 636	4 993	1 271	31 026	..
<b>2000-2001</b>	2 074	1 169	21 253	6 462	1 156	30 959	..
<b>2000</b>							
April	213	77	1 581	358	94	2 229	2 407
May	246	94	1 909	524	119	2 772	2 402
June	197	86	1 629	474	105	2 386	2 232
July	170	71	1 436	451	89	2 129	2 166
August	166	88	1 710	480	91	2 444	2 336
September	152	83	1 467	418	84	2 120	2 165
October	151	65	1 397	492	90	2 105	2 123
November	160	82	1 757	542	85	2 542	2 357
December	143	88	1 688	483	80	2 402	2 690
<b>2001</b>							
January	121	97	1 497	426	79	2 141	2 644
February	151	88	1 630	455	96	2 323	2 464
March	189	120	2 098	622	111	3 029	2 801
April	180	101	1 950	580	103	2 811	2 902
May	246	134	2 405	782	123	3 567	3 147
June	247	151	2 217	731	127	3 346	3 193

(a) Excludes refinancing.

(b) Excludes alterations and additions.

Source: *Housing Finance for Owner Occupation, Australia (Cat. no. 5609.0)*.



	Budget 12 months to 30/06/2001	Actual 11 months to 31/05/2001
	\$m	\$m
<b>State revenues</b>		
Taxation	12 412	11 804
Commonwealth grants	12 780	11 777
Capital Repatriations	2 400	3 203
Financial Distributions	1 210	1 123
Fines, regulatory fees and other	792	838
<i>Total state revenues</i>	29 594	28 745
<b>Operating revenues</b>		
Sale of goods and services	2 171	2 092
Investment income	391	426
Grants and contributions	421	478
Other revenue	298	266
<i>Total operating revenues</i>	3 281	3 262
<b>Expenses</b>		
Employee Related — super valuations	0	1 182
Employee Related — super other	1 540	1 507
Employee related — other	12 157	11 238
Other operating	6 765	6 344
Maintenance	1 120	992
Depreciation and amortisation	995	1 316
Recurrent grants and subsidies	4 060	4 535
Capital grants and subsidies	1 252	1 002
Finance valuations	278	711
Finance other	1 009	903
<i>Total expenses</i>	29 176	29 730
<b>Gain/(loss) on sale of non-current assets</b>	<b>-14</b>	<b>1</b>
<b>Net cost of services</b>	<b>25 909</b>	<b>26 467</b>
<b>Operating Surplus</b>	<b>3 685</b>	<b>2 278</b>
less valuation gains	-1 888	-848
less capital acquisitions	-2 540	-1 980
plus depreciation	995	1 316
plus asset sales & other	407	115
<b>Budget Surplus</b>	<b>659</b>	<b>881</b>

(a) The format for reporting NSW Government Finance Statistics has been amended to ensure consistency with the reporting framework used in the 2001–02 Budget Papers. Changes include the end of separate reporting of abnormal items and the consequent need to create a new revenue category (Capital Repatriations) and two new expense categories (Superannuation Valuations and Finance Valuations). Additionally there have been some minor reclassification between expenses and capital expenditure. However, the budgeted Surplus is unchanged from that reported in the 2000–01 Budget Papers.

Source: Financial Statement released by NSW Treasury. Figures may differ from data published in annual ABS publications.

23 ACTUAL PRIVATE NEW FIXED CAPITAL EXPENDITURE, CURRENT PRICES, NSW AND AUSTRALIA — TREND

Type of asset	Latest period	New South Wales			Australia		
		Latest figure	Change from prior period	Change from same period prior year	Latest figure	Change from prior period	Change from same period prior year
		\$m	%	%	\$m	%	%
New buildings and structures	Mar qtr 2001	629	-15.3	-34.9	2 102	-14.0	-25.8
Equipment, plant and machinery	Mar qtr 2001	2 700	-4.3	-4.8	7 612	1.2	-0.2
<b>Total</b>	Mar qtr 2001	<b>3 329</b>	<b>-6.6</b>	<b>-12.4</b>	<b>9 714</b>	<b>-2.5</b>	<b>-7.1</b>

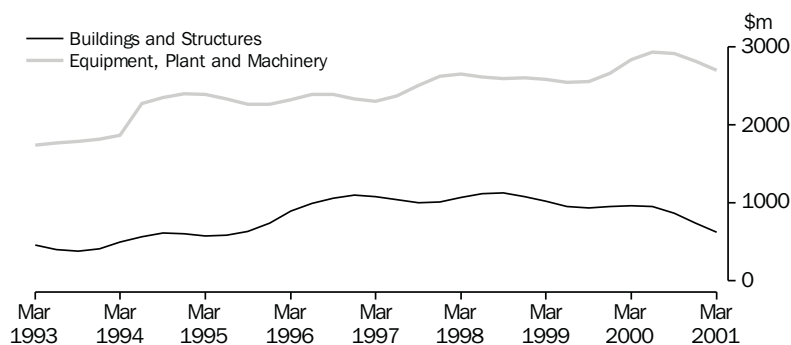
Source: State Estimates of Private New Capital Expenditure (Cat. no. 5646.0).

24 ACTUAL PRIVATE NEW FIXED CAPITAL EXPENDITURE, CURRENT PRICES, NSW — TREND

	Type of asset		Total
	New buildings and structures	Equipment, plant and machinery	
	\$m	\$m	\$m
<b>1999</b>			
December qtr	952	2 661	3 613
<b>2000</b>			
March qtr	966	2 835	3 801
June qtr	952	2 938	3 890
September qtr	872	2 918	3 790
December qtr	743	2 820	3 563
<b>2001</b>			
March qtr	629	2 700	3 329

Source: State Estimates of Private New Capital Expenditure (Cat. no. 5646.0).

25 ACTUAL PRIVATE NEW FIXED CAPITAL EXPENDITURE, CURRENT PRICES, NSW — TREND



Source: State Estimates of Private New Capital Expenditure (Cat. no. 5646.0).

26 INTERNATIONAL TRADE, IMPORTS(a) AND EXPORTS(b) — NSW AND AUSTRALIA(c)

	Latest period	New South Wales			Australia		
		Latest figure	Change from prior period		Latest figure	Change from prior period	
			\$m	%		\$m	%
Overseas imports into NSW	Jun 2001	4 312	2.2	-11.4	9 479	-5.1	-9.2
Total overseas exports(d)	Jun 2001	1 920	-3.8	1.4	10 088	8.6	18.0
Export commodities and SITC(e) code							
Meat and meat preparations (01)	Jun 2001	140	0.2	50.9	580	6.6	36.7
Cereals and cereal preparations (04)	Jun 2001	70	-53.7	-37.4	372	-35.4	19.9
Wool and other animal hair (268)	Jun 2001	74	-9.4	12.0	252	-4.9	0.0
Coal, coke and briquettes (32)	Jun 2001	335	-4.3	25.1	1 091	2.2	38.5
Iron and steel (67)	Jun 2001	16	28.3	-83.3	60	-5.2	-63.1
Aluminium (684)	Jun 2001	136	-0.5	5.4	386	0.7	25.4
Office machines and automatic data processing machines (75)	Jun 2001	30	-6.3	4.0	54	9.2	17.2

(a) Figures shown are Customs value.

(b) Restrictions are placed on the release of statistics for certain commodities for reasons of confidentiality. The restrictions do not affect total export and import figures, but they can affect figures at State and commodity levels. More information on the treatment of confidential data in international merchandise trade statistics can be obtained from the Information Paper, International Merchandise Trade Statistics, Australia: Data Confidentiality (Cat. no. 5487.0), or the International Trade Confidentiality Manager on 02 6252 5409. Figures shown are Free On Board (FOB) values.

(c) All percentages are calculated using unrounded figures.

(d) Excludes re-exported goods.

(e) Standard International Trade Classification Revision 3.

Source: ABS data available on request, International Trade database.

27 INTERNATIONAL TRADE, IMPORTS(a) AND EXPORTS(b) — NSW

	Overseas exports of SITC(c) commodities								
	Overseas imports into NSW	Total overseas exports(d)	Meat and meat preparations (01)	Cereals and cereal preparations (04)	Wool and other animal hair (268)	Coal, coke and briquettes (32)	Iron and steel (67)	Aluminium (684)	Office machines and automatic data processing machines (75)
	\$m	\$m	\$m	\$m	\$m	\$m	\$m	\$m	\$m
<b>1999-2000</b>	47 927	18 966	1 047	1 270	826	3 092	831	1 341	379
<b>2000-2001</b>	52 506	22 720	1 384	1 517	1 047	3 832	247	1 643	359
<b>2000</b>									
April	3 534	1 612	87	94	59	285	98	109	35
May	4 580	1 771	93	118	69	295	109	122	30
June	4 866	1 768	93	112	66	268	94	129	29
July	4 493	1 779	101	138	66	318	64	129	31
August	4 947	1 826	99	143	66	301	67	135	27
September	4 472	1 843	89	149	78	292	10	134	30
October	5 071	2 042	120	160	114	337	10	148	37
November	4 936	1 973	118	139	112	283	11	149	26
December	4 243	2 017	105	118	103	309	12	129	36
<b>2001</b>									
January	3 881	1 565	94	87	63	313	9	125	19
February	3 493	1 706	r 116	116	84	262	10	125	27
March	r 4 321	2 055	132	118	123	327	12	160	35
April	r 4 116	r 1 998	130	125	83	404	14	137	31
May	r 4 220	r 1 995	r 140	r 152	81	350	12	136	r 32
June	4 312	1 920	140	70	74	335	16	136	30

(a) Figures shown are Customs value.

(b) Restrictions are placed on the release of statistics for certain commodities for reasons of confidentiality. The restrictions do not affect total export and import figures, but they can affect figures at State and commodity levels. More information on the treatment of confidential data in international merchandise trade statistics can be obtained from the Information Paper, International Merchandise Trade Statistics, Australia: Data Confidentiality (Cat. no. 5487.0), or the International Trade Confidentiality Manager on 02 6252 5409. Figures shown are Free On Board (FOB) values.

(c) Standard International Trade Classification Revision 3.

(d) Excludes re-exported goods.

Source: ABS data available on request, International Trade database.

## FOR MORE INFORMATION...

- INTERNET* **www.abs.gov.au** the ABS web site is the best place to start for access to summary data from our latest publications, information about the ABS, advice about upcoming releases, our catalogue, and Australia Now—a statistical profile.
- LIBRARY* A range of ABS publications is available from public and tertiary libraries Australia-wide. Contact your nearest library to determine whether it has the ABS statistics you require, or visit our web site for a list of libraries.
- CPI INFOLINE* For current and historical Consumer Price Index data, call 1902 981 074 (call cost 77c per minute).
- DIAL-A-STATISTIC* For the latest figures for National Accounts, Balance of Payments, Labour Force, Average Weekly Earnings, Estimated Resident Population and the Consumer Price Index call 1900 986 400 (call cost 77c per minute).

## INFORMATION SERVICE

Data which have been published and can be provided within five minutes are free of charge. Our information consultants can also help you to access the full range of ABS information—ABS user-pays services can be tailored to your needs, time frame and budget. Publications may be purchased. Specialists are on hand to help you with analytical or methodological advice.

- PHONE* **1300 135 070**
- EMAIL* **client.services@abs.gov.au**
- FAX* 1300 135 211
- POST* Client Services, ABS, GPO Box 796, Sydney 1041

## WHY NOT SUBSCRIBE?

ABS subscription services provide regular, convenient and prompt deliveries of ABS publications and products as they are released. Email delivery of monthly and quarterly publications is available.

- PHONE* 1300 366 323
- EMAIL* subscriptions@abs.gov.au
- FAX* 03 9615 7848
- POST* Subscription Services, ABS, GPO Box 2796Y, Melbourne 3001



2130710009012  
ISSN 1031-8534

RRP \$18.00